



The Chemical Company

Tenopa® SC

Reg. No. / Reg. Nr: L8863

Act No. / Wet Nr 36 of / van1947

IRAC INSECTICIDE GROUP CODES 3 & 15

Tenopa® is a broad spectrum suspension concentrate insecticide, for the control of crawling and flying insects, such as the American- and German cockroach, brown house ant, houseflies, cat fleas, fish moths, bedbugs and litter beetle and is suitable for use in domestic premises, poultry sheds, public buildings including hospitals, hotels and restaurants, kitchens and in industry, including food processing plants.

IRAC INSEKODERGOEPKODES 3 & 15

Tenopa® is 'n breëspektrum suspensiekonsentraatinsekdoder, vir die beheer van kruipende en vlieënde insekte, soos Amerikaanse- en Duitse kakkerlakke, bruin huismier, huisvlieë, vlooië, vismotte, weeluis en alfitobiuskewer en -larwes, binnenshuis, pluimveehokke en publieke geboue, ingesluit hospitale, hotelle en restaurante, kombuise en ook in industriële geboue soos voedselprosesseerfabrieke.

Active ingredient / Aktiewe bestanddeel:

Alpha-Cypermethrin (Pyrethroid)
Flufenoxuron (Acylurea)

30 g / ℓ
30 g / ℓ

**FOR FULL PARTICULARS, SEE ENCLOSED PAMPHLET
VIR VOLLE BESONDERHEDE, KYK INGESLOTE PAMFLET**

Registered by / Geregistreer deur:

BASF South Africa (Pty) Ltd. / BASF Suid-Afrika (Edms) Bpk.
Co. Reg. No. / Mpy Reg. Nr 66/10235/07
P.O. Box 2801 / Posbus 2801, Halfway House 1685 / Halfweghuis 1685

1 ℓ

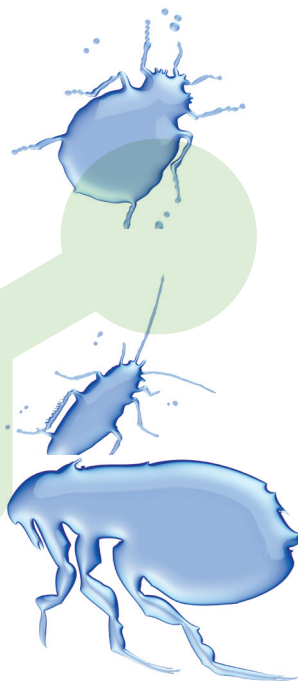
UN Number / VN Nummer: 1993

EMERGENCY NUMBER / NOODNUMMER: 083 265 3805

App. code 27 / 11 / 02

Batch Number /
Lotnommer:

Date manufactured /
Datum vervaardig:



®Registered Trade Mark of BASF /
Geregistreerde Handelsmerk van BASF

81066879 ZA 1042



CAUTION
VERSIGTIG





WARNINGS

- Handle with care.
- Avoid contamination of the eyes with the concentrate.
- Toxic to fish and other aquatic life. Do not contaminate water bodies.
- Flammable - do not store near open flame.
- Store under lock and key in a cool place and away from food and feedstuffs.
- Keep out of reach of children, uninformed persons and animals.
- DO NOT HANDLE TREATED FABRICS UNTIL DRY AND AIR THOROUGHLY BEFORE USE.
- IN CASE OF ACCIDENTAL POISONING, CALL A DOCTOR AND MAKE THIS LABEL AVAILABLE TO HIM.
- IN CONTINUOUSLY OCCUPIED AREAS USE ONLY AS A BAND, SPOT OR CRACK AND CREVICE TREATMENT. DO NOT APPLY TO CLOTHING OR BEDDING. UNPROTECTED PERSONS AND ANIMALS MUST BE KEPT AWAY FROM TREATED AREAS UNTIL SURFACES ARE DRY.

Although this remedy has been extensively tested under a large variety of conditions, the registration holder does not warrant that it will be efficacious under all conditions, because the action and effect thereof may be affected by factors, such as abnormal climatic and storage conditions, quality of dilution water, compatibility with other substances not indicated on the label and the occurrence of resistance of a pest against the remedy concerned, as well as by the method, time and accuracy of application. The registration holder furthermore does not accept responsibility for damage to crops, vegetation, the environment, harm to man or animal, lack of performance of the remedy concerned, due to failure of the user to follow the label instructions, or due to the occurrence of conditions, which could not have been foreseen in terms of the registration. Consult the supplier in the event of any uncertainty.

PRECAUTIONS

- Avoid inhalation of and contact with the spray mist.
- Cover food, food preparing equipment and eating utensils before application. Remove or cover fish tanks/bowls before application.
- Wash with soap and water after accidental skin contact.
- In case of accidental contamination of the eyes, wash the eyes thoroughly with running water.
- Do not eat, drink or smoke while mixing or applying unless having washed hands and face.
- Use appropriate containment to avoid environmental contamination
- Keep product in original container
- Keep container tightly closed

- TRIPLE RINSE empty containers in the following manner: Invert the empty container over the spray applicator and allow to drain for at least 30 seconds after the flow has slowed down to a drip. Thereafter rinse the container three times with a volume of water equal to a minimum of 10 % of that of the container. Add the rinsings to the contents of the spray tank before destroying the container.
- Destroy empty containers by perforation and flattening and never re-use for any other purpose.
- Avoid contamination of food, feeds, drinking water and eating utensils.

FIRST AID TREATMENT

- IF IN EYES :** Immediately wash affected eyes for at least 15 minutes under running water with eyelids held open.
- IF SWALLOWED :** Immediately rinse mouth and then drink plenty of water, do not induce vomiting, seek medical attention.
- IF ON SKIN :** Wash skin with plenty of soap and water.
- IF INHALED :** Keep patient calm, remove to fresh air, seek medical attention.

NOTE TO PHYSICIAN

Tenopa[®] contains a pyrethroid insecticide and an acylurea insecticide. This product is of low toxicity by oral and dermal routes. Poisoning is unlikely to occur. Treat according to symptoms (decontamination, vital functions), no known specific antidote.

DIRECTIONS FOR USE:

USE ONLY AS DIRECTED

Compatibility:

Tenopa[®] should be applied as a solo product and NOT in mixtures with any other products

Mixing instructions:

Apply using any conventional manual or power sprayers equipped to produce a course spray. Add the appropriate volume of **Tenopa**[®] to the required volume of clean water and agitate. Maintain agitation while spraying. Prepared spray mixture must not be left in the spray tank for any length of time, e.g. overnight.

All spray applications must be made with suitable equipment, that is in good working order and correctly calibrated, to give the desired coverage, for that particular method of application.





PEST	DOSAGE	DIRECTIONS FOR APPLICATION
PUBLIC HEALTH House flies, Brown house ant, Bedbugs, Fish moths, Fleas and Cockroaches (American & German)	25 ml - 50 ml per 5 litres and apply to 100 m ²	Apply as a coarse spray or with a paintbrush to cracks, crevices and any other places where these insects may hide and on surfaces over which they may crawl or settle. Apply as a coarse spray to the point of run-off Use the higher rate where infestation is severe or where surfaces are dirty or highly absorbent.
POULTRY SHEDS (When not occupied by birds) Lesser Mealworm / Litter beetle (<i>Alphitobius diaperinus</i>)	25 ml - 50 ml per 5 litres and apply to 100 m ²	Apply as a coarse spray to the interior surfaces of the sheds. Ensure thorough wetting of the floors, walls and other surfaces. Repeat if necessary. Use higher dose rate for longer lasting control or where infestation is severe. (DO NOT SPRAY WHILE BIRDS ARE IN THE SHEDS). Ensure that the spray has dried before animals re-enter. Alternate treatments with a pesticide from a different chemical group. Should efficacy be poor or when reinfestation occurs, use a pesticide from a different chemical group.

WAARSKUWINGS

- Hanteer versigtig.
- Verhoed kontaminasie van die konsentraat met die oë.
- Giftig vir visse en ander akwatiese lewe. Moenie water kontamineer nie.
- Vlambaar – moenie naby oop vlam stoor nie.
- Bêre agter slot en grendel in 'n koel plek, weg van voedsel en voer.
- Hou buite bereik van kinders, oningeligte persone en diere.
- **MOENIE BEHANDELDE MATERIAAL HANTEER VOORDAT DIT NIE DROOG IS NIE. BELUG DEEGLIK VOOR GEBRUIK.**
- **IN GEVAL VAN TOEVALLIGE VERGIFTIGING MOET 'N GENEESHEER INGEROEP WORD EN DIE ETIKET AAN HOM GETOON WORD.**
- **IN AREAS WAT GEDURIGDEUR GEBRUIK WORD, MOET SLEGS**
- **BAND-, KOL- OF KRAAKBESPUITINGS TOEGEPAS WORD. MOENIE OP KLERE OF BEDDEGOED TOEDIEN NIE. PERSONE WAT NIE MET BESKERMDE OORKLERE BEDEK IS NIE EN DIERE MOET WEGGEHOU WORD VAN BEHANDELDE AREAS, TOTDAT DIE OPPERVLAKKE DROOG IS.**

Alhoewel hierdie middel omvattend en onder 'n groot verskeidenheid toestande getoets is, waarborg die registrasiehouer nie dat dit onder alle toestande doeltreffend sal wees nie, aangesien die werking en effek daarvan beïnvloed kan word deur faktore, soos abnormale grond, klimaats- en bergingstoestande, kwaliteit van verdunningswater, saambuikbaarheid met ander stowwe wat nie op die etiket aangedui is nie, en die voorkoms van weerstand van 'n plaag teen die betrokke middel, sowel as die metode, tyd en akkuraatheid van toediening. Verder aanvaar die registrasiehouer nie verantwoordelikheid vir skade aan gewasse, plantegroei, die omgewing, nadelige effek op mens of dier, of vir 'n gebrek aan prestasie as gevolg van die versuim van die gebruiker om etiketaanwysings na te kom, of as gevolg van die ontstaan van toestande, wat nie kragtens die registrasie voorsien kon word nie. Raadpleeg die verskaffer in die geval van enige onsekerheid.

VOORSORGMATREËLS

- Verhoed inaseming of kontak met spuitnewel.
- Bedek voedsel en voedsel voorbereidingstoerusting en eetgerei voor toediening. Verwyder of bedek visteks voor toediening.
- Was met seep en water indien toevallige velkontak plaasvind.
- Indien produk per toeval in die oë beland, was oë deeglik met lopende water.
- Moenie eet, rook of drink terwyl gemeng of gespuit word nie en alvorens die hande en gesig nie eers gewas is nie.
- Pas geskikte maatreëls toe sodat die omgewing nie besoedel word nie.
- Hou die produk in die oorspronklike houer.





- Hou houer se deksel dig toe.
- Leë houers moet **DRIEKEER UITGESPOEL** word soos volg: Keer die leë houer om oor die spuitnek of mengbak en dreineer vir minstens 30 sekondes nadat die vloeitot 'n gedrup verminder het. Spoel die houer daarna driekeer uit met 'n volume water gelykstaande aan 'n minimum van 10 % van die houer. Gooi die spoelwater by die inhoud van die spuitnek, voordat die houer op die voorgeskrewe wyse vernietig word.
- Vernietig leë houer deur gate in te kap en plat te slaan en raak op 'n veilige wyse daarvan ontslae en moenie vir enige ander doel hergebruik nie.
- Voorkom besoedeling van voedsel, voer, drinkwater en eetgerei.

NOODHULPBEHANDELING

- INDIEN IN DIE OË:** Spoel aangetaste oë vir ten minste 15 minute met lopende water, terwyl die ooglede oopgehou word. Raadpleeg 'n oogspesialis.
- INDIEN INGESLUK:** Spoel mond dadelik uit en drink baie water, verkry mediese hulp. Moenie braking veroorsaak nie.
- INDIEN OP DIE VEL:** Was aangetaste area deeglik met seep en water.
- INDIEN INGEASEM:** Hou pasiënt kalm en verwyder na vars lug. Verkry mediese hulp.

NOTA AAN GENEESHEER

Tenopa® bevat piretroïde en is 'n acylurea insekdoder. Hierdie produk het 'n lae oraal- en dermale toksisiteit. Die kans van vergiftiging is onwaarskynlik. Behandel simptome (reinig, belangrikste funksies). Daar is geen spesifieke teenmiddel nie.

GEBRUIKSAANWYSINGS: GEBRUIK SLEGS SOOS VOORGESKRYF

Verenigbaarheid:
Gebruik **Tenopa**® op sy eie en NIE in megsels met enige ander produk nie.

Menginstruksies:
Gebruik 'n konvensionele handaangedrewe- of kragaangedrewe spuitapparaat, wat 'n growwe spuitnewel spuit. Voeg die verlangde volume van **Tenopa**® by die verlange volume skoon water en roer. Volhou roering gedurende bespuiting. Aangemaakte spuitmengsel moenie in die spuitnek gelaat word vir enige bepaalde tydperk, bv. oornag, nie.

Alle toedienings moet gemaak word met geskikte toerusting, wat in goeie werkende toestand en korrek gekalibreer is, ten einde die verlangde bedekking te gee vir die betrokke toedieningsmetode.

PLAAG	DOSIS	GEBRUIKSAANBEVELINGS
OPENBARE GESONDHEID Huisvlieë. Bruin huismiere. Weeluisse. Vismotte. Vlooi. Kakkertakke (Amerikaanse en Duitse).	25 - 50 ml / 5 l water (bedek 100 m ²)	Wend as 'n growwe bespuiting aan of dien met 'n kwas aan krake, holtes en enige plek toe waar insekte mag wegkruip, of op oppervlakte waaroor insekte mag beweeg of op gaan sit. Dien tot punt van afloop toe. Gebruik die hoër dosis onder hoë infestasiedruk of wanneer oppervlakte vuil of hoogs absorberend is.
PLUIMVEEHOKKE (Wanneer geen voëls teenwoordig is nie) Kleinmeelwurm / Alfotobiuskewer en -larwes. (<i>Alfotobius diaperinus</i>)	25 - 50 ml / 5 l water (bedek 100 m ²)	Wend aan binne-oppervlakte van hokke as 'n growwe bespuiting toe en verseker goeie benatting van vloere, mure en alle ander oppervlakte. Herhaal indien nodig. Dien die hoër dosis toe waar langer periodes van beheer verlang word, of waar hoë infestasië voorkom. (MOENIE TOEDIEN TERWYL DIE VOËLS IN DIE HOKKE IS NIE). Maak seker dat die oppervlakte droog is voordat die voëls teruggeplaas word. Wissel behandelings met 'n plaagdoder van 'n ander chemiese groep af. Indien swak beheer verkry is of waar herinfestasië voorkom, moet 'n plaagdoder van 'n ander chemiese groep gebruik word.





The Chemical Company

Tenopa® SC

Reg. No. / Reg. Nr: L8863

Act No. / Wet Nr 36 of / van1947

IRAC INSECTICIDE GROUP CODES 3 & 15

Tenopa® is a broad spectrum suspension concentrate insecticide, for the control of crawling and flying insects, such as the American- and German cockroach, brown house ant, houseflies, cat fleas, fish moths, bedbugs and litter beetle and is suitable for use in domestic premises, poultry sheds, public buildings including hospitals, hotels and restaurants, kitchens and in industry, including food processing plants.

IRAC INSEKODERGOEPKODES 3 & 15

Tenopa® is 'n breëspektrum suspensiekonsentraatinsekdoder, vir die beheer van kruipende en vlieënde insekte, soos Amerikaanse- en Duitse kakkerlakke, bruin huismier, huisvlieë, vlooië, vismotte, weeluis en alfitobiuskewer en -larwes, binnenshuis, pluimveehokke en publieke geboue, ingesluit hospitale, hotelle en restaurante, kombuise en ook in industriële geboue soos voedselprosesseerfabrieke.

Active ingredient / Aktiewe bestanddeel:

Alpha-Cypermethrin (Pyrethroid)
Flufenoxuron (Acylurea)

30 g / ℓ
30 g / ℓ

**FOR FULL PARTICULARS, SEE ENCLOSED PAMPHLET
VIR VOLLE BESONDERHEDE, KYK INGESLOTE PAMFLET**

Registered by / Geregistreer deur:

BASF South Africa (Pty) Ltd. / BASF Suid-Afrika (Edms) Bpk.
Co. Reg. No. / Mpy Reg. Nr 66/10235/07
P.O. Box 2801 / Posbus 2801, Halfway House 1685 / Halfweghuis 1685

1 ℓ

UN Number / VN Nummer: 1993

EMERGENCY NUMBER / NOODNUMMER: 083 265 3805

App. code 27 / 11 / 02

Batch Number /
Lotnommer:

Date manufactured /
Datum vervaardig:

®Registered Trade Mark of BASF /
Geregistreerde Handelsmerk van BASF

81066879 ZA 1042



CAUTION
VERSIGTIG

